



Global Wheat Supply and Demand Situation

Wheat, Licensed Warehouse and Futures
Congress & Exhibition

Teresa McKeivier
Senior Wheat Analyst
Foreign Agricultural Service
United States Department of Agriculture



USDA's Foreign Agricultural Service



Mission Statement:

Linking U.S. agriculture to the world to enhance export opportunities and global food security

USDA Foreign Agricultural Service works to improve foreign market access for U.S. products, builds new markets, increase competitiveness for U.S. agriculture in the global marketplace, and provides assistance to developing foreign countries.



The Value of USDA Data



- **Impacts global commodity markets and prices**
- **The data is considered to be reliable, credible, objective and unbiased**
- **Data used around the world by:**
 - Private traders and analysts
 - Other governments and policy makers
 - International organizations and publications



FAS/Global Commodity Analysis Division Functions



- Analyze and evaluate market intelligence
- Work with other USDA agencies to estimate World Agricultural Supply and Demand Estimates (WASDE)
- Update (monthly) official Production, Supply, and Demand databases (PSD)
- Publish monthly global commodity reports
- Reports are FREE!

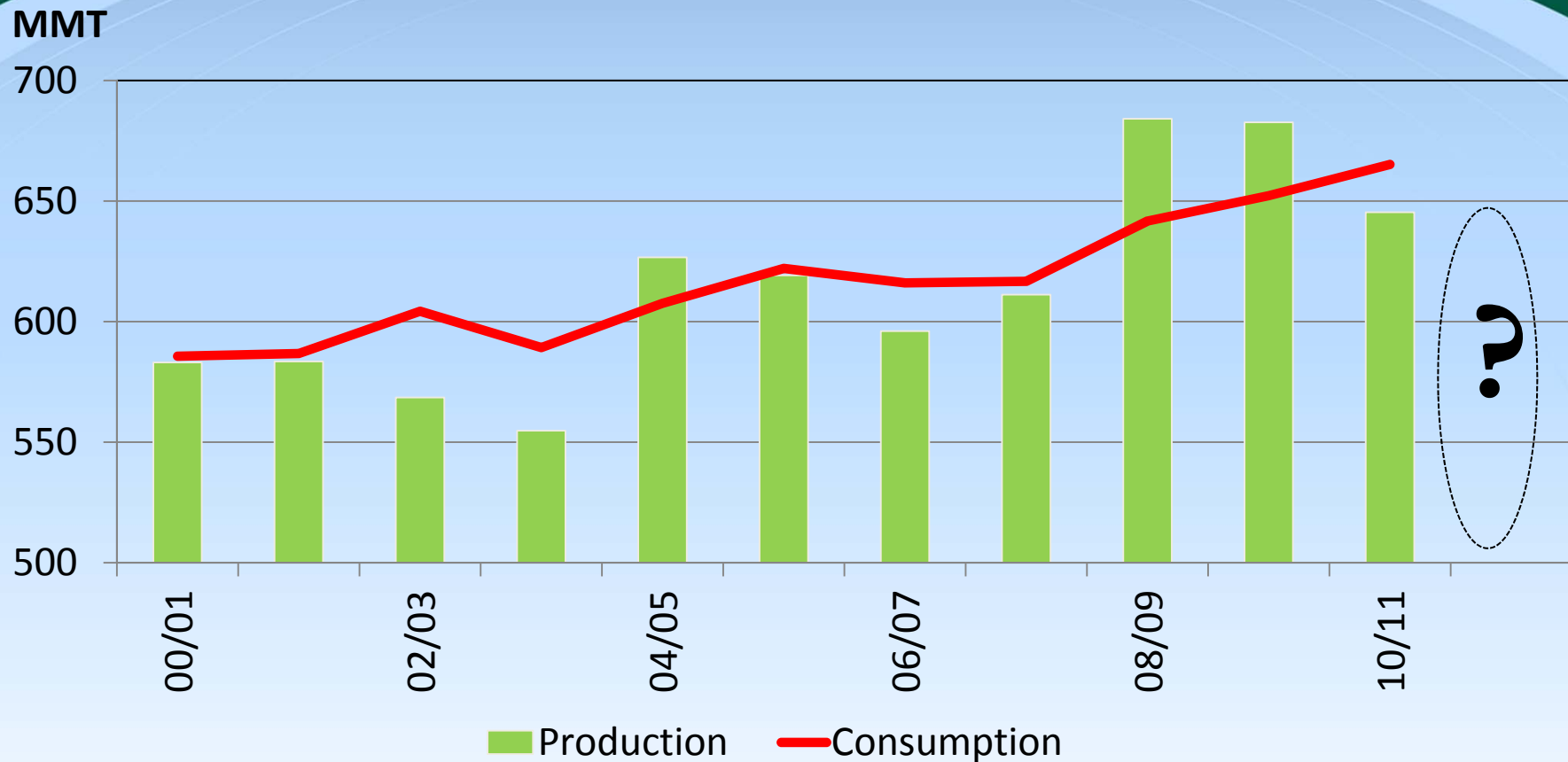




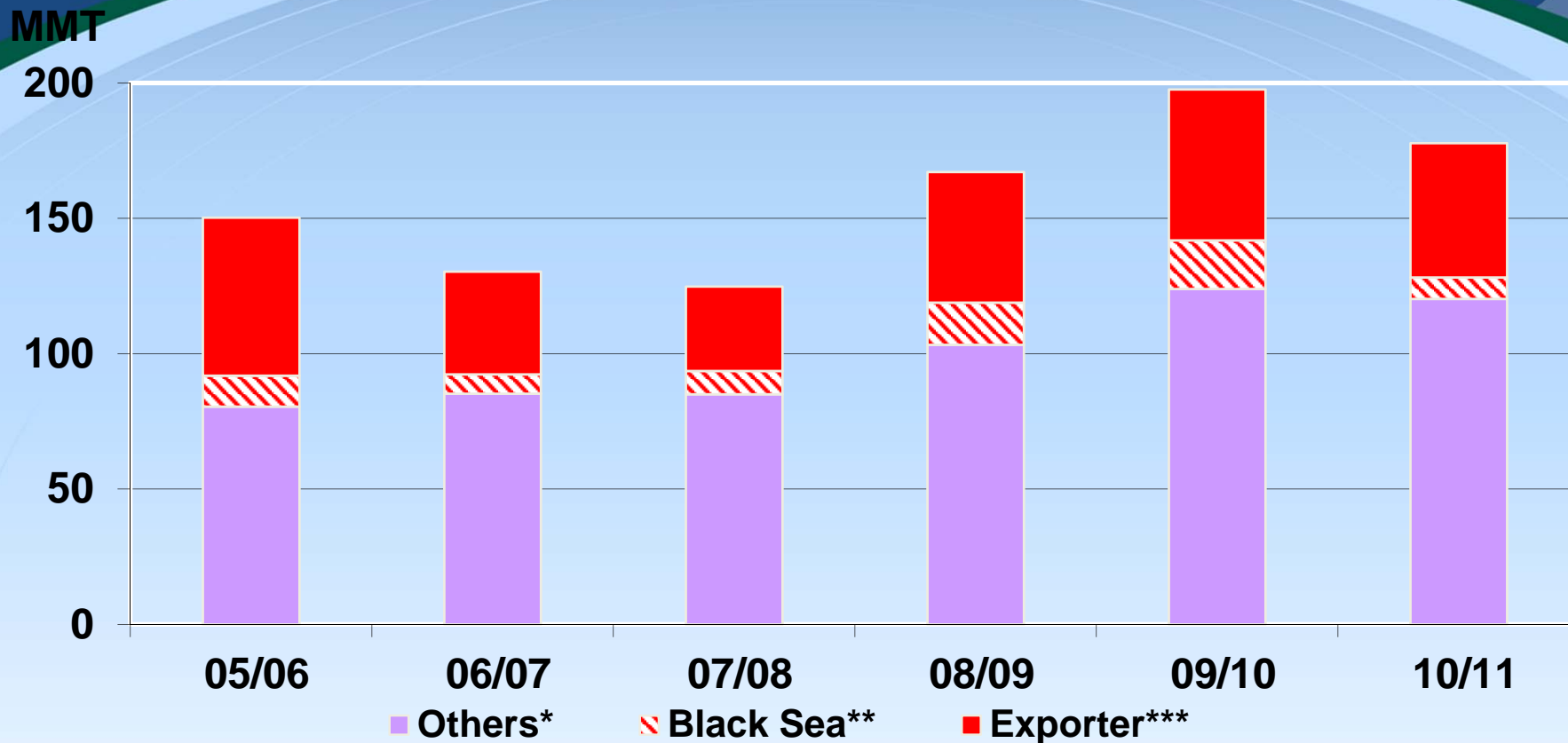
Global Wheat Supply and Demand Situation



Wheat: Need More Production to Meet Rising Global Consumption



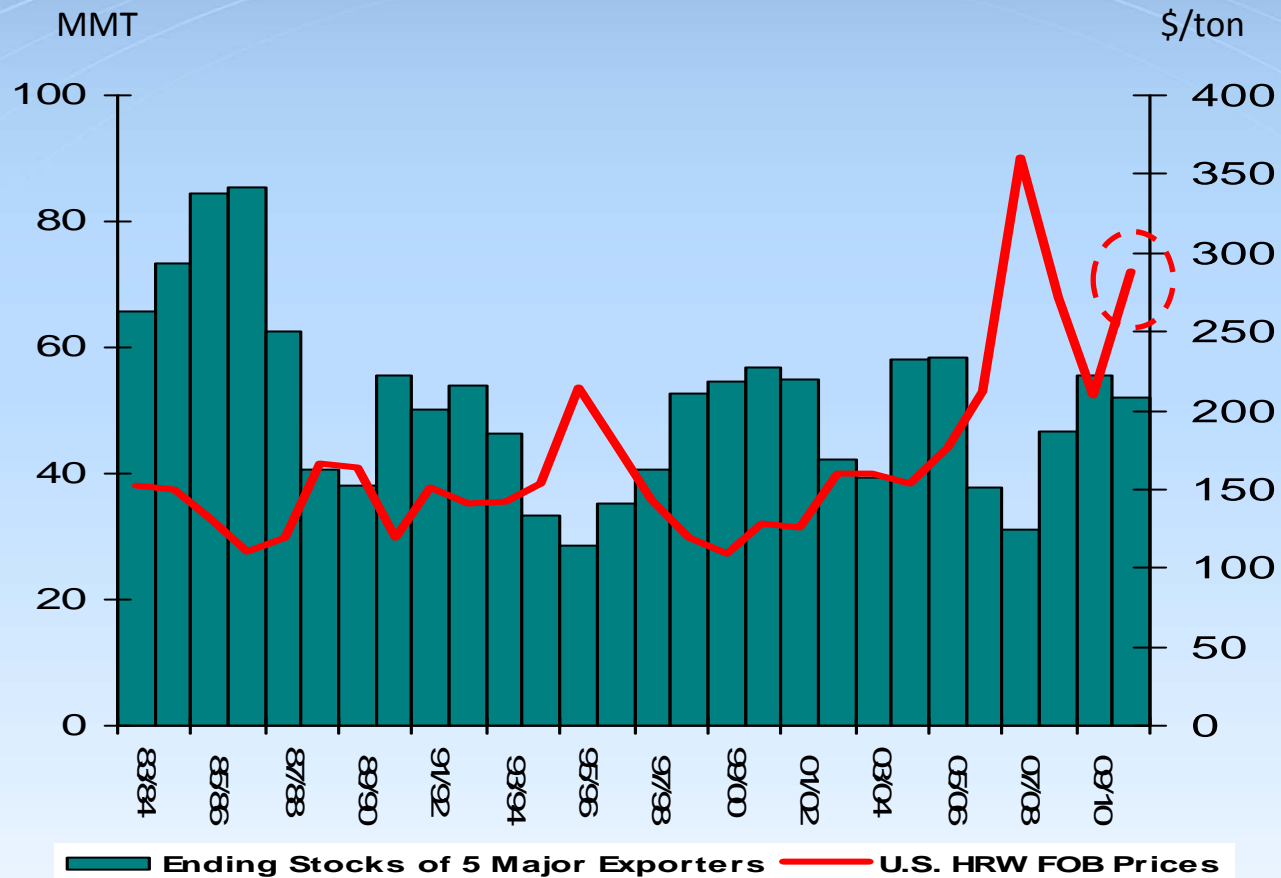
Wheat Stocks Held by Exporters Still Ample



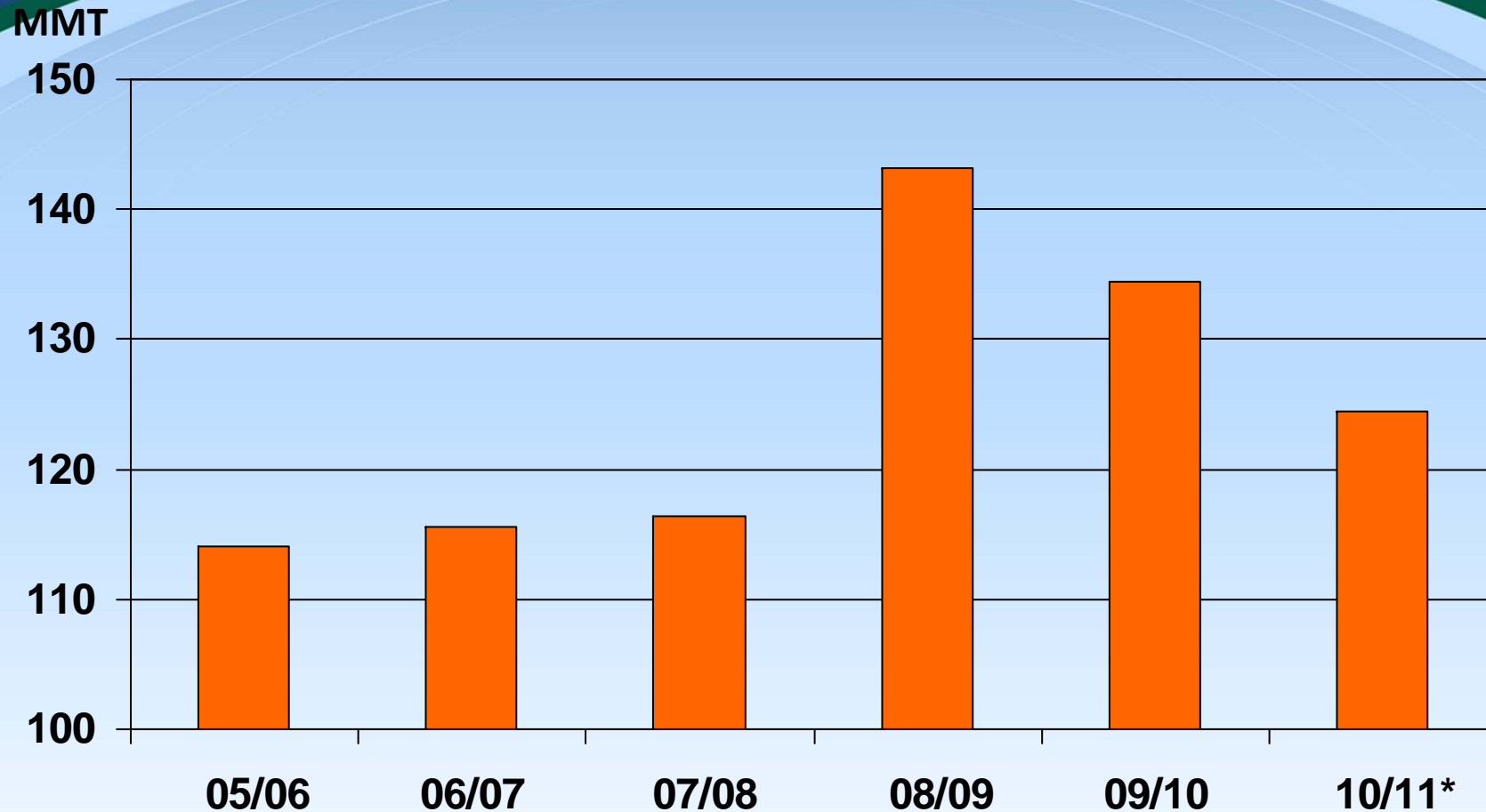
*Most stocks unavailable to World **Kazakhstan, Russia and Ukraine ***Argentina, Australia, Canada, EU, U.S.



Strong Inverse Relationship Between Wheat Exporter Stocks and Prices

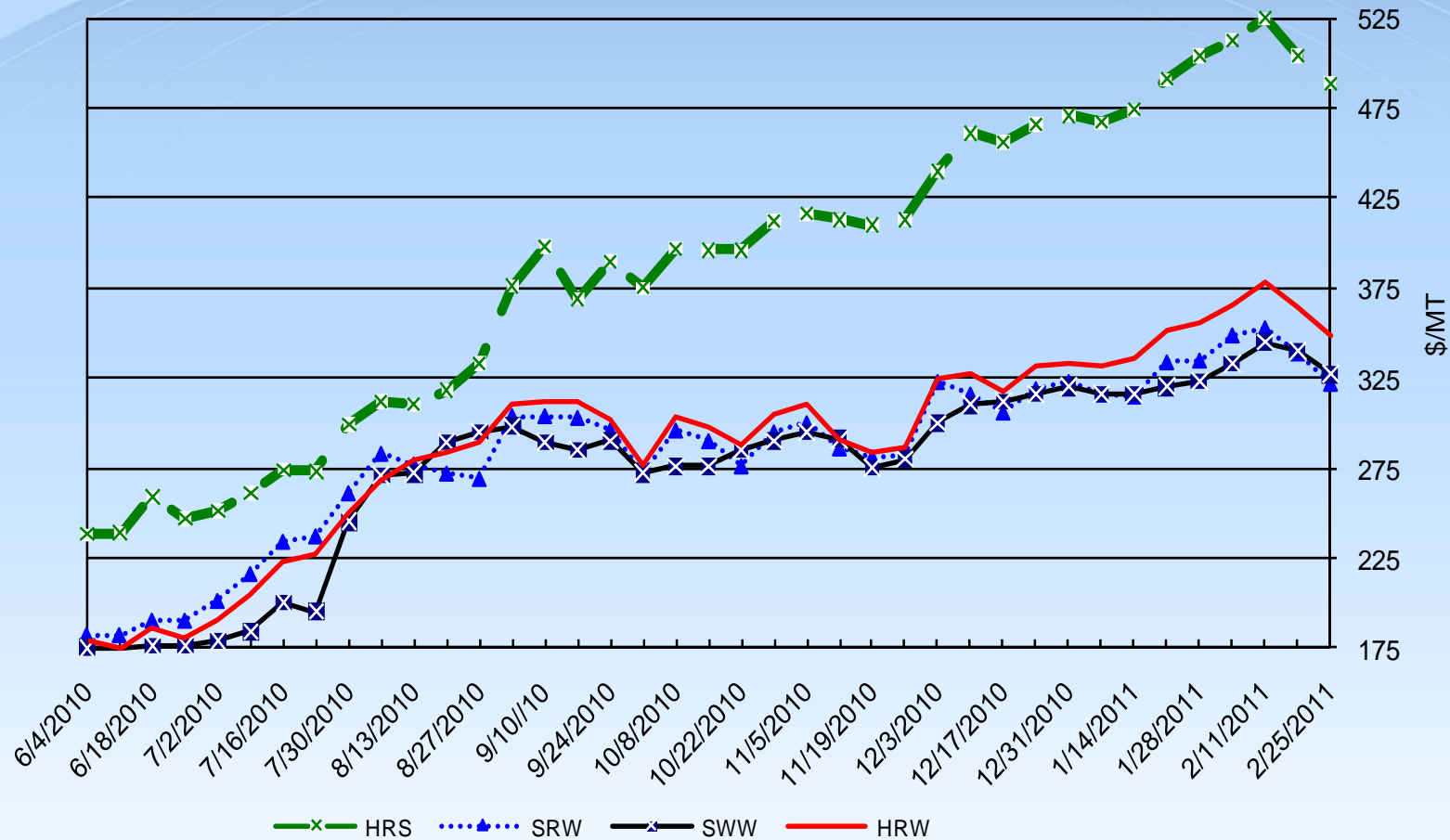


World Wheat Import Demand Eases on Higher Prices



U.S. Wheat Export Prices Doubled Since July

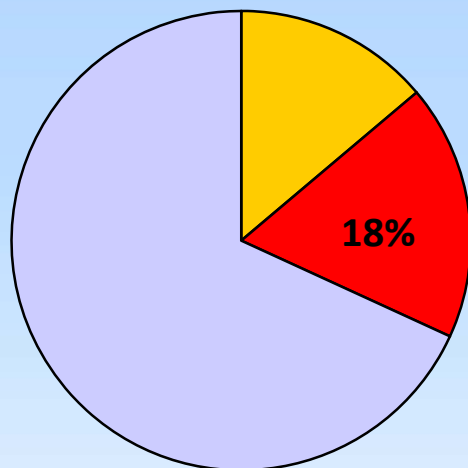
U.S. Weekly FOB Export Bids



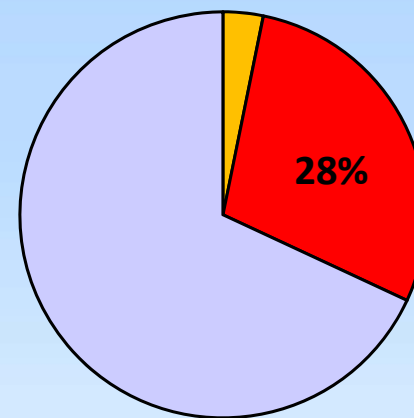
U.S. Expands Global Market Share as Russia Exits



2009/10



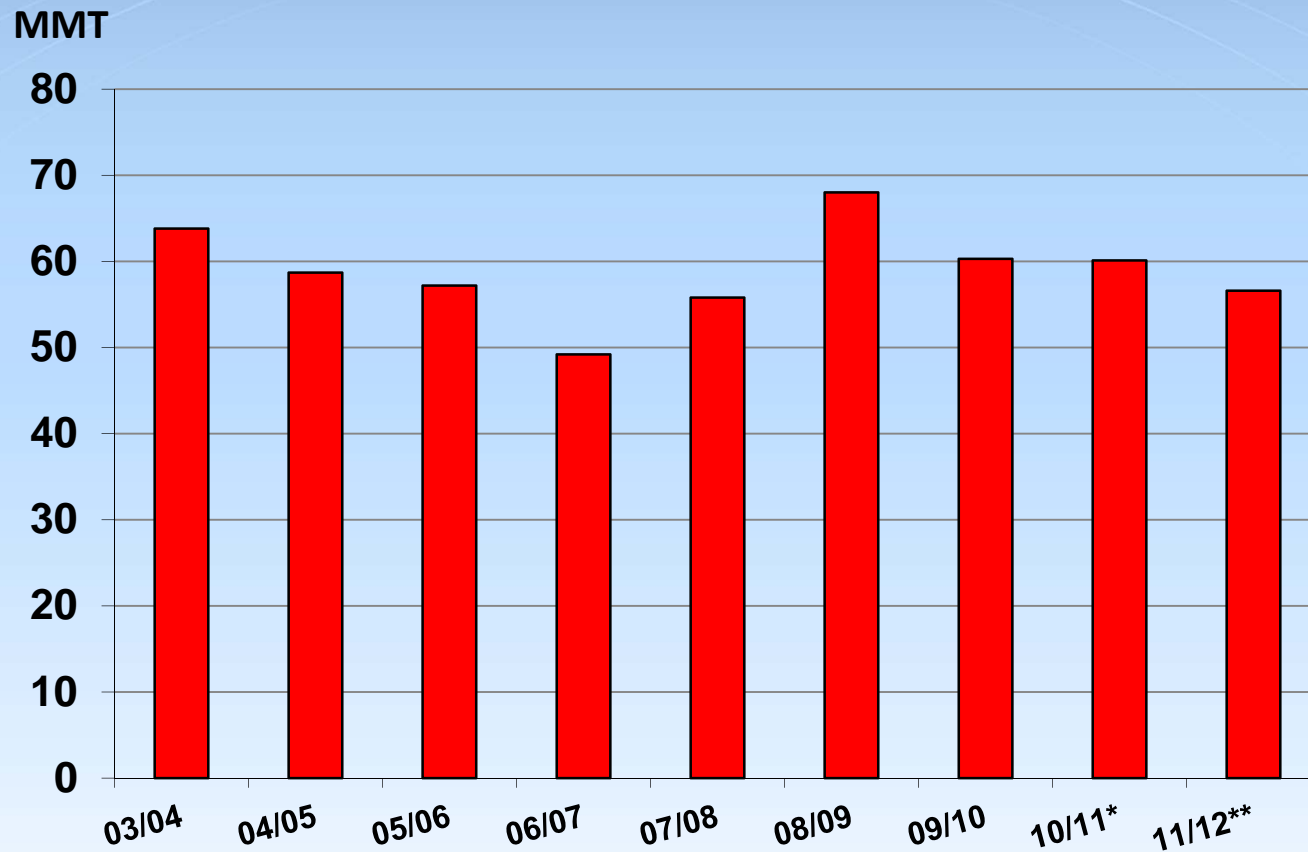
2010/11*



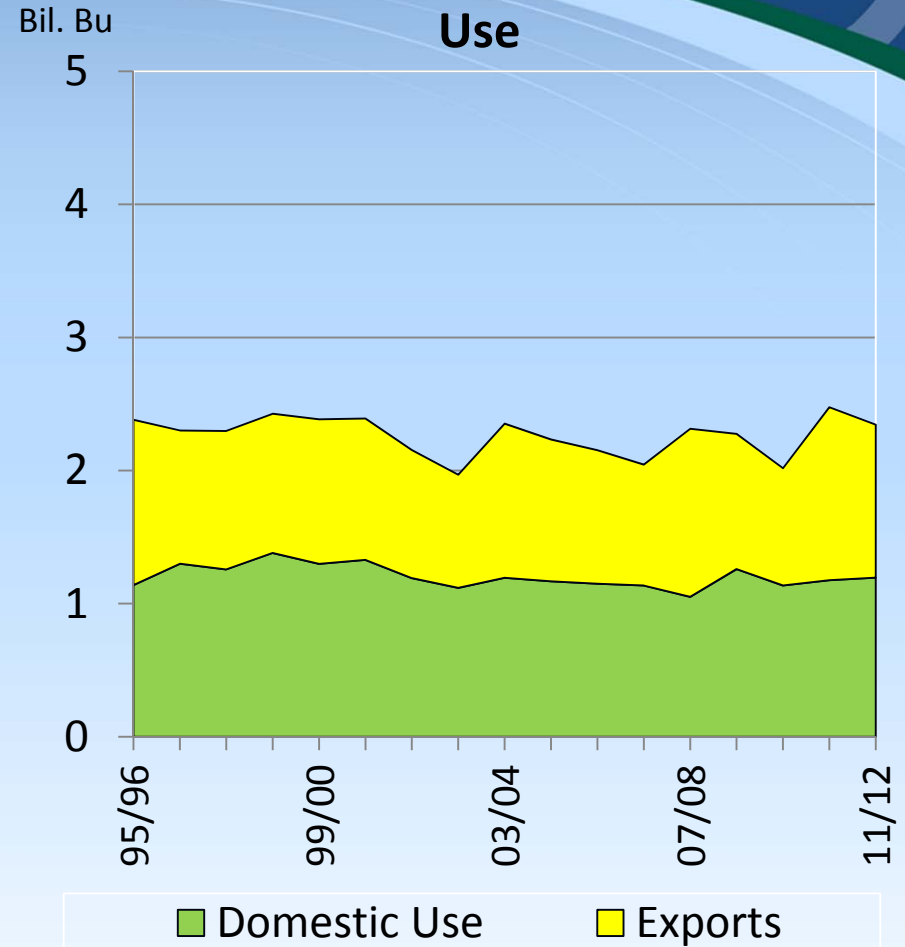
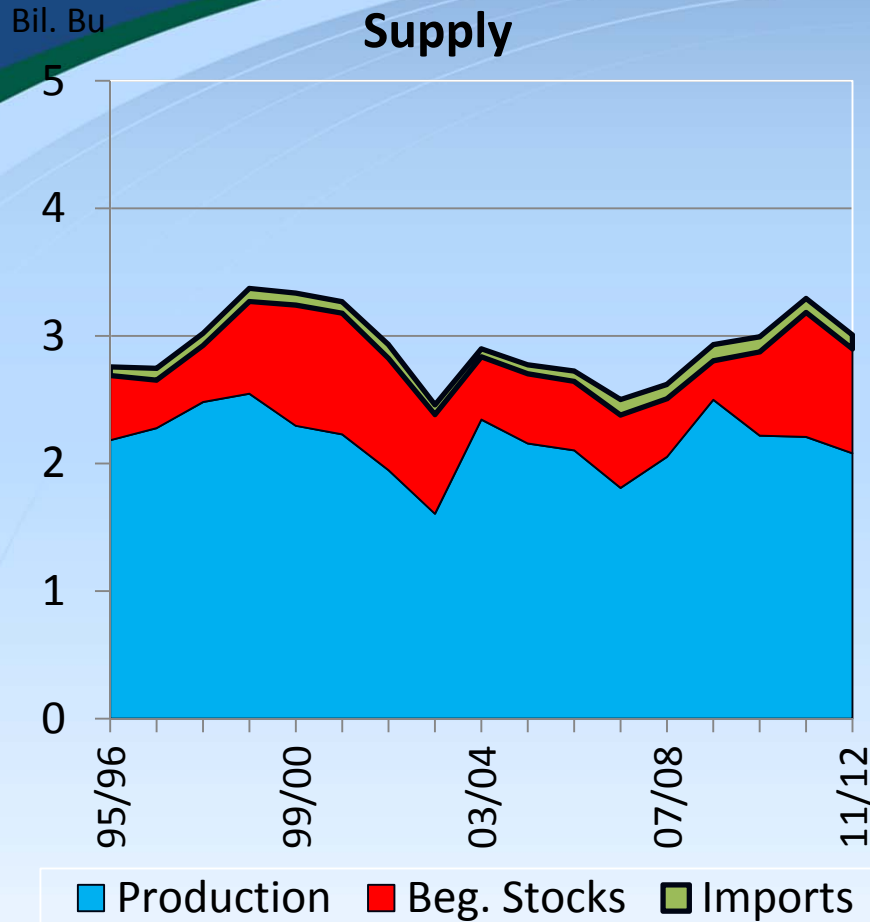
- Russia
- United States
- Others



2011/12 U.S. Wheat Production Forecast Down Slightly



U.S. Wheat: Lower Production and Carry-In Stocks, Exports Still Strong



Global Factors Shaping 2011



- **Production responses to high prices? Canada, EU, South America, and Australia**
 - **U.S. Wheat production expected to be lower than last year**
 - **Higher winter Wheat Area, lower spring wheat area, lower yields**
- **Degree of Russian crop recovery- Continued export ban?**
- **Winter Wheat crop conditions? Firm wheat Prices U.S. Farmgate price forecast at a record\$7.50/bushel)**
- **2011/12 USDA Official World Agricultural Supply and Demand Estimates released May 11, 2011**





- Thank-you

- <http://www.fas.usda.gov/>

